

Overview

The **Khronos Historian Pump** is a data service utility which pushes data from an on-premise historian to an MS SQL Server, whether on-premise or in the cloud.

Configuration Synchronisation

The Khronos Historian Pump will automatically synchronise the historian tags that are available for transfer with the historian repository on a regular basis, and make new tags available for transfer automatically upon detection.

Users can nominate a subset of tags to be transferred via the tag selection wizard, or alternatively, simply request that all new tags be automatically included in the next pumping operation.

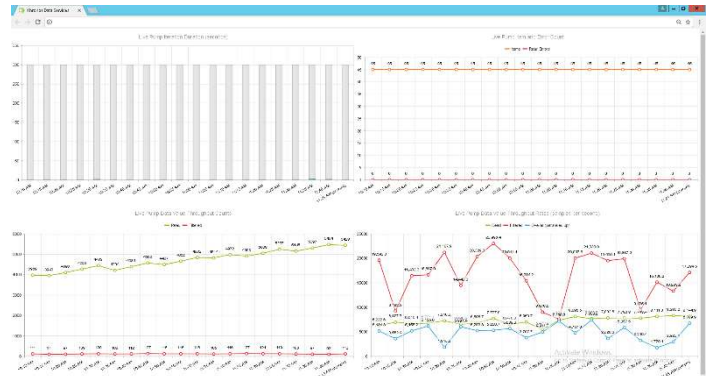
Live Data Pump

Tags which are selected for Live Pumping, will automatically pump any new values which are stored by the historian to the target database. As part of this transfer process, the Khronos Historian Pump will perform a number of data consolidation rules which are configurable by the user either on a global basis, or a tag-by-tag basis.

Historical Data Scavenge

Tags which are selected for Data Scavenging will automatically recurse through the entire history of the tag in the historian repository, and push that entire history to the target database. If a new tag is selected for scavenging later on, its history will be uploaded at that point in time even through the scavenge process already completed for all other tags prior to that selection. Data consolidation rules will be applied to scavenge data, similarly to live data.

The scavenge works its way backwards from current time, ensuring that data close to current time is available for access and reporting in the target database sooner, and older data is available later.



Performance Statistics Dashboard

Data Consolidation Rules

The following data consolidation rules can be applied to data being pumped to the target database. These can be applied either on a global basis, or adjusted specifically for a subset of individual tags:

- Don't pump consecutive, duplicate samples
- Don't pump samples which are within a nominated deviation from the last pumped sample
- Only perform live pumping for this tag
- Only perform scavenge pumping for this tag
- Perform both live and scavenge pumping

Features at a glance:

- Supports FactoryTalk Historian
- Supports OSI PI Historian
- Supports MS SQL Server 2012 or later
- Supports Azure SQL dB
- Web-browser configuration
- Web-browser performance statistics and health monitoring
- Subscription pricing to minimise capital outlay and provide flexibility of service

Contact us at www.startgroup.com.au for details.